

PRO1 - TMS

Informations générales

Code: PRO1

Titre: TMS

Type: TPRO1 - Implementation

Statut: En cours

Sponsor: ENT1 - VT Supply Chain (Interne)

Référence du train: None

Météo: Aucun(e)

Taux avancement global estimé: 0

Taux avancement délai: 0

Date de début: 2025-06-01 00:00:00

Date de fin estimée: 2026-09-30 00:00:00

Date de fin réelle: None

Budget OPEX estimé: None

Budget OPEX réel: None

Budget CAPEX estimé: None

Budget CAPEX réel: None

Caractéristiques

Caractéristique	Nature	Valeur
-----------------	--------	--------

Contexte

OPmobility has decided to implement a central TMS (Transport Management System) solution that did not previously exist (either at the local or central level).

This solution requires process changes in the supply chain, the creation of ad-hoc department, and the implementation of an IT system supporting the entire process.

This solution will transform the transport operations' company across Mexico, US/Canada, Europe, and the rest of the world (APAC and South America regions).

Contributeurs

Entité	Acteur	Rôle
--------	--------	------

ADR

ADR	Description
-----	-------------

Key results

Key result	Description	Type
------------	-------------	------

Processus

Processus

Adhérences

Projet	Type	Impact
--------	------	--------

Démarche

Contraintes

Contrainte	Description
------------	-------------

Exigences

Exigence	Type	Description
PROEX1	Non fonctionnelle	User characteristics: In general, the users will be able to use the solution from a PC, a laptop or a tablet via the web portal of the solution. External partners will access the application only via the web portal; the admin user will have direct access (such as SSH) to the solution.
PROEX2	Non fonctionnelle	Location characteristics: The solution will be in long term to spread worldwide. In the context of the current document, the following country/region will be in the order withing the scope: Mexico, US/Canada, EMEA, APAC, SAO
PROEX3	Non fonctionnelle	Load characteristics: The shipment volume will progressively increase yearly: 2026: 100 000 shipments,2027: 450 000 shipments,2028: 470 000 shipments These volumes are approximative and will be detailed during the editor workshops.

Sécurité

Sécurité	Description
----------	-------------

Capacités

Capacité	Type	Impact
----------	------	--------

Objets métiers

Objet métier	Type	Impact
--------------	------	--------

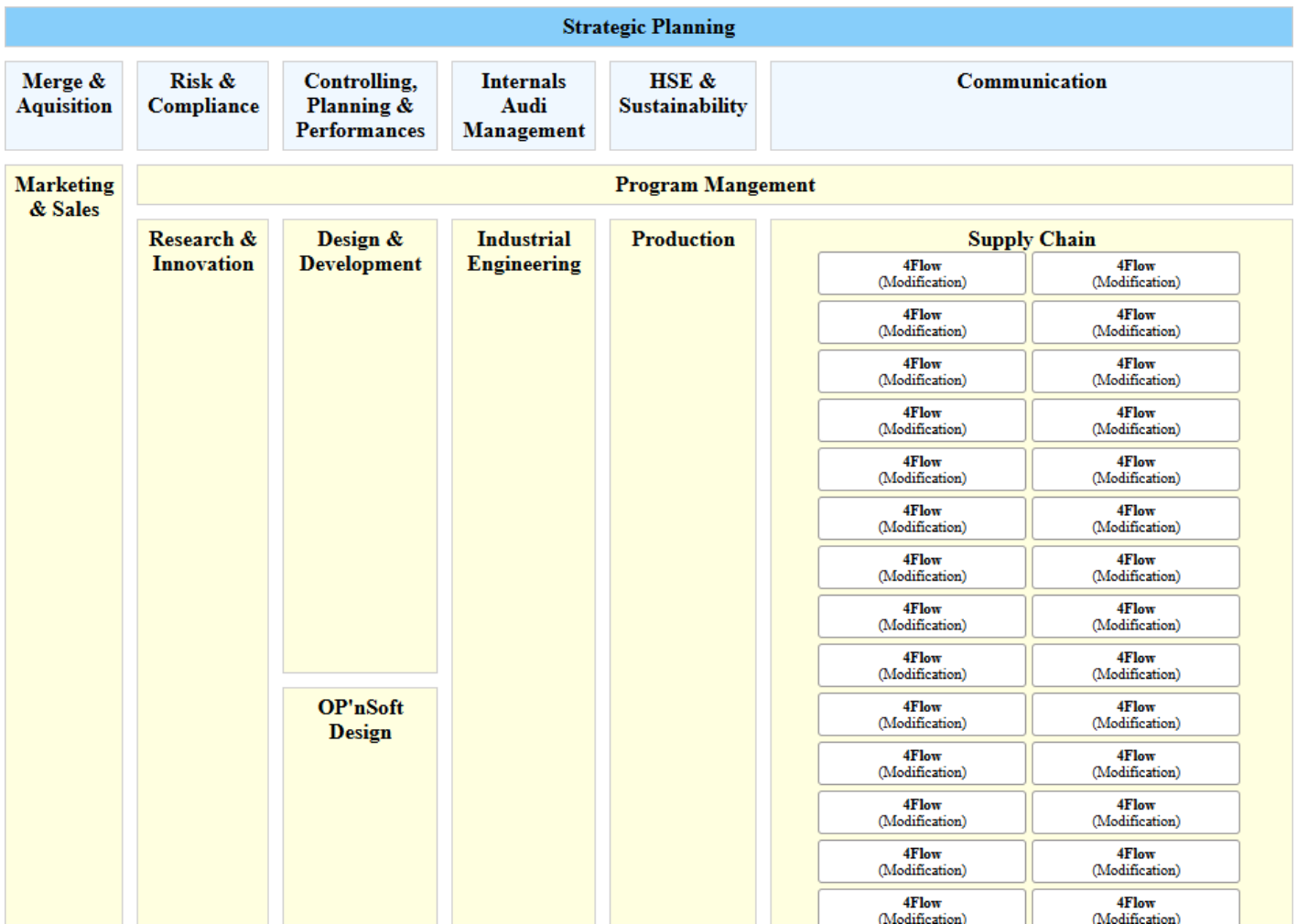
Services

Service	Type	Impact
---------	------	--------

Solution applicative: PROSCEN1 - Applicative Solution

Description: None

Paysage applicatif impacté



Applications

Application	Type	Impact
APP954 - 4Flow	Modification	Introduction of a central TMS for transport planning, execution, optimization, and freight invoice control. Consumes master and demand data from SAP/EDI, performs transport and MRP related optimization, and sends outputs back to SAP. Carrier operational systems remain out of OPMobility responsibility.
APP955 - BOOMI	Modification	Extension of the integration layer to orchestrate SAP-TMS exchanges. Implements new SAP interfaces (master data, invoices) using the Boomi for SAP add on where available, or custom BAPIs for Lighting.
APP952 - SAP ECC6 Exterior	Modification	Activation and extension of interfaces toward the TMS ecosystem: exposure of master data, exchange of MRP optimization results, reception of carrier invoices for posting and archiving, and generation of new outbound logistics messages (plant to plant and returnable ASN)

Composants logiciels

Composant logiciel	Type	Impact
CLOG328 - Boomi for SAP Add-on (SAP ECC6 Exterior)	Modification	To be installed in SAP for each BG except for Lighting

Flux logiques

Flux logique	Type	Impact
--------------	------	--------

Revision #1

Created 28 April 2026 05:09:03 by Technical User

Updated 28 April 2026 05:09:04 by Technical User