

OPM_Sandbox_1 - Transformation

Transformation

- [PRO1 - TMS](#)
 - [PRO1 - TMS](#)
- [PRO1 - TMS](#)
 - [PRO1 - TMS](#)
- [PRO1 - TMS](#)
 - [PRO1 - TMS](#)
- [PRO1 - TMS](#)
 - [PRO1 - TMS](#)
- [PRO1 - TMS](#)
 - [PRO1 - TMS](#)
- [PRO1 - TMS](#)
 - [PRO1 - TMS](#)
- [PRO1 - TMS](#)
 - [PRO1 - TMS](#)
- [ADR1 - adr1](#)
 - [ADR1 - adr1](#)
- [DETTE1 - ma dette](#)
 - [DETTE1 - ma dette](#)
- [PRO2 - TEST](#)

- [PRO2 - TEST](#)
- [ADR2 - adr1](#)
 - [ADR2 - adr1](#)
- [DETTE2 - ma dette](#)
 - [DETTE2 - ma dette](#)
- [ADR3 - adr1](#)
 - [ADR3 - adr1](#)
- [PRO3 - un nouveau projet](#)
 - [PRO3 - un nouveau projet](#)
- [DETTE3 - test](#)
 - [DETTE3 - test](#)

PRO1 - TMS

PRO1 - TMS

Informations générales

Code: PRO1

Titre: TMS

Type: TPRO1 - Implementation

Statut: En cours

Sponsor: ENT1 - VT Supply Chain (Interne)

Référence du train: None

Méteo: Aucun(e)

Taux avancement global estimé: 0

Taux avancement délai: 0

Date de début: 2025-06-01 00:00:00

Date de fin estimée: 2026-09-30 00:00:00

Date de fin réelle: None

Budget OPEX estimé: None

Budget OPEX réel: None

Budget CAPEX estimé: None

Budget CAPEX réel: None

Caractéristiques

Caractéristique	Nature	Valeur
-----------------	--------	--------

Contexte

OPmobility has decided to implement a central TMS (Transport Management System) solution that did not previously exist (either at the local or central level).

This solution requires process changes in the supply chain, the creation of ad-hoc department, and the implementation of an IT system supporting the entire process.

This solution will transform the transport operations' company across Mexico, US/Canada, Europe, and the rest of the world (APAC and South America regions).

Contributeurs

Entité	Acteur	Rôle
--------	--------	------

ADR

ADR	Description
-----	-------------

Key results

Key result	Description	Type
------------	-------------	------

Processus

Processus

Adhérences

Projet	Type	Impact
--------	------	--------

Démarche

Contraintes

Contrainte	Description
------------	-------------

Exigences

Exigence	Type	Description
PROEX1	Non fonctionnelle	User characteristics: In general, the users will be able to use the solution from a PC, a laptop or a tablet via the web portal of the solution. External partners will access the application only via the web portal; the admin user will have direct access (such as SSH) to the solution.
PROEX2	Non fonctionnelle	Location characteristics: The solution will be in long term to spread worldwide. In the context of the current document, the following country/region will be in the order withing the scope: Mexico, US/Canada, EMEA, APAC, SAO
PROEX3	Non fonctionnelle	Load characteristics: The shipment volume will progressively increase yearly: 2026: 100 000 shipments,2027: 450 000 shipments,2028: 470 000 shipments These volumes are approximative and will be detailed during the editor workshops.

Sécurité

Sécurité	Description
----------	-------------

Capacités

Capacité	Type	Impact
----------	------	--------

Objets métiers

Objet métier	Type	Impact
--------------	------	--------

Services

Service	Type	Impact
---------	------	--------

Solution applicative: PROSCEN1 - Applicative Solution

Description: None

Paysage applicatif impacté



Applications

Application	Type	Impact
APP954 - 4Flow	Modification	Introduction of a central TMS for transport planning, execution, optimization, and freight invoice control. Consumes master and demand data from SAP/EDI, performs transport and MRP related optimization, and sends outputs back to SAP. Carrier operational systems remain out of OPMobility responsibility.

APP955 - BOOMI	Modification	Extension of the integration layer to orchestrate SAP-TMS exchanges. Implements new SAP interfaces (master data, invoices) using the Boomi for SAP add on where available, or custom BAPIs for Lighting.
APP952 - SAP ECC6 Exterior	Modification	Activation and extension of interfaces toward the TMS ecosystem: exposure of master data, exchange of MRP optimization results, reception of carrier invoices for posting and archiving, and generation of new outbound logistics messages (plant to plant and returnable ASN)

Composants logiciels

Composant logiciel	Type	Impact
CLOG328 - Boomi for SAP Add-on (SAP ECC6 Exterior)	Modification	To be installed in SAP for each BG except for Lighting

Flux logiques

Flux logique	Type	Impact
--------------	------	--------

PRO1 - TMS

PRO1 - TMS

Informations générales

Code: PRO1

Titre: TMS

Type: TPRO1 - Implementation

Statut: En cours

Sponsor: ENT1 - VT Supply Chain (Interne)

Référence du train: None

Méteo: Aucun(e)

Taux avancement global estimé: 0

Taux avancement délai: 0

Date de début: 2025-06-01 00:00:00

Date de fin estimée: 2026-09-30 00:00:00

Date de fin réelle: None

Budget OPEX estimé: None

Budget OPEX réel: None

Budget CAPEX estimé: None

Budget CAPEX réel: None

Caractéristiques

Caractéristique	Nature	Valeur
-----------------	--------	--------

Contexte

OPmobility has decided to implement a central TMS (Transport Management System) solution that did not previously exist (either at the local or central level).

This solution requires process changes in the supply chain, the creation of ad-hoc department, and the implementation of an IT system supporting the entire process.

This solution will transform the transport operations' company across Mexico, US/Canada, Europe, and the rest of the world (APAC and South America regions).

Contributeurs

Entité	Acteur	Rôle
--------	--------	------

ADR

ADR	Description
-----	-------------

Key results

Key result	Description	Type
------------	-------------	------

Processus

Processus

Adhérences

Projet	Type	Impact
--------	------	--------

Démarche

Contraintes

Contrainte	Description
------------	-------------

Exigences

Exigence	Type	Description
PROEX1	Non fonctionnelle	User characteristics: In general, the users will be able to use the solution from a PC, a laptop or a tablet via the web portal of the solution. External partners will access the application only via the web portal; the admin user will have direct access (such as SSH) to the solution.
PROEX2	Non fonctionnelle	Location characteristics: The solution will be in long term to spread worldwide. In the context of the current document, the following country/region will be in the order withing the scope: Mexico, US/Canada, EMEA, APAC, SAO
PROEX3	Non fonctionnelle	Load characteristics: The shipment volume will progressively increase yearly: 2026: 100 000 shipments,2027: 450 000 shipments,2028: 470 000 shipments These volumes are approximative and will be detailed during the editor workshops.

Sécurité

Sécurité	Description
----------	-------------

Capacités

Capacité	Type	Impact
----------	------	--------

Objets métiers

Objet métier	Type	Impact
--------------	------	--------

Services

Service	Type	Impact
---------	------	--------

Solution applicative: PROSCEN1 - Applicative Solution

Description: None

Paysage applicatif impacté



Applications

Application	Type	Impact
APP954 - 4Flow	Modification	Introduction of a central TMS for transport planning, execution, optimization, and freight invoice control. Consumes master and demand data from SAP/EDI, performs transport and MRP related optimization, and sends outputs back to SAP. Carrier operational systems remain out of OPMobility responsibility.

APP955 - BOOMI	Modification	Extension of the integration layer to orchestrate SAP-TMS exchanges. Implements new SAP interfaces (master data, invoices) using the Boomi for SAP add on where available, or custom BAPIs for Lighting.
APP952 - SAP ECC6 Exterior	Modification	Activation and extension of interfaces toward the TMS ecosystem: exposure of master data, exchange of MRP optimization results, reception of carrier invoices for posting and archiving, and generation of new outbound logistics messages (plant to plant and returnable ASN)

Composants logiciels

Composant logiciel	Type	Impact
CLOG328 - Boomi for SAP Add-on (SAP ECC6 Exterior)	Modification	To be installed in SAP for each BG except for Lighting

Flux logiques

Flux logique	Type	Impact
--------------	------	--------

PRO1 - TMS

PRO1 - TMS

Informations générales

Code: PRO1

Titre: TMS

Type: TPRO1 - Implementation

Statut: En cours

Sponsor: ENT1 - VT Supply Chain (Interne)

Référence du train: None

Méteo: Aucun(e)

Taux avancement global estimé: 0

Taux avancement délai: 0

Date de début: 2025-06-01 00:00:00

Date de fin estimée: 2026-09-30 00:00:00

Date de fin réelle: None

Budget OPEX estimé: None

Budget OPEX réel: None

Budget CAPEX estimé: None

Budget CAPEX réel: None

Caractéristiques

Caractéristique	Nature	Valeur
-----------------	--------	--------

Contexte

OPmobility has decided to implement a central TMS (Transport Management System) solution that did not previously exist (either at the local or central level).

This solution requires process changes in the supply chain, the creation of ad-hoc department, and the implementation of an IT system supporting the entire process.

This solution will transform the transport operations' company across Mexico, US/Canada, Europe, and the rest of the world (APAC and South America regions).

Contributeurs

Entité	Acteur	Rôle
--------	--------	------

ADR

ADR	Description
-----	-------------

Key results

Key result	Description	Type
------------	-------------	------

Processus

Processus

Adhérences

Projet	Type	Impact
--------	------	--------

Démarche

Contraintes

Contrainte	Description
------------	-------------

Exigences

Exigence	Type	Description
PROEX1	Non fonctionnelle	User characteristics: In general, the users will be able to use the solution from a PC, a laptop or a tablet via the web portal of the solution. External partners will access the application only via the web portal; the admin user will have direct access (such as SSH) to the solution.
PROEX2	Non fonctionnelle	Location characteristics: The solution will be in long term to spread worldwide. In the context of the current document, the following country/region will be in the order withing the scope: Mexico, US/Canada, EMEA, APAC, SAO
PROEX3	Non fonctionnelle	Load characteristics: The shipment volume will progressively increase yearly: 2026: 100 000 shipments,2027: 450 000 shipments,2028: 470 000 shipments These volumes are approximative and will be detailed during the editor workshops.

Sécurité

Sécurité	Description
----------	-------------

Capacités

Capacité	Type	Impact
----------	------	--------

Objets métiers

Objet métier	Type	Impact
--------------	------	--------

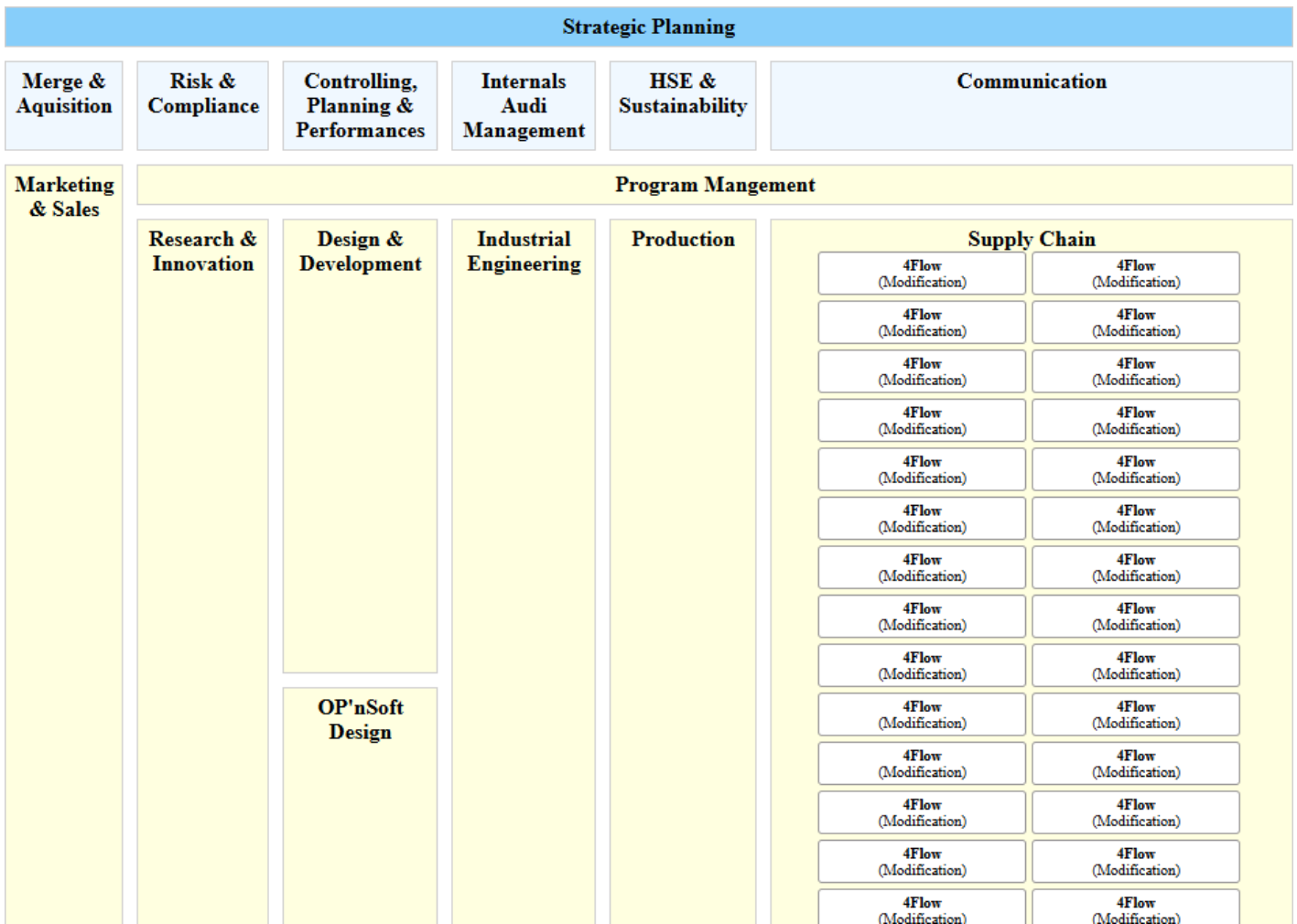
Services

Service	Type	Impact
---------	------	--------

Solution applicative: PROSCEN1 - Applicative Solution

Description: None

Paysage applicatif impacté



Applications

Application	Type	Impact
APP954 - 4Flow	Modification	Introduction of a central TMS for transport planning, execution, optimization, and freight invoice control. Consumes master and demand data from SAP/EDI, performs transport and MRP related optimization, and sends outputs back to SAP. Carrier operational systems remain out of OPMobility responsibility.
APP955 - BOOMI	Modification	Extension of the integration layer to orchestrate SAP-TMS exchanges. Implements new SAP interfaces (master data, invoices) using the Boomi for SAP add on where available, or custom BAPIs for Lighting.
APP952 - SAP ECC6 Exterior	Modification	Activation and extension of interfaces toward the TMS ecosystem: exposure of master data, exchange of MRP optimization results, reception of carrier invoices for posting and archiving, and generation of new outbound logistics messages (plant to plant and returnable ASN)

Composants logiciels

Composant logiciel	Type	Impact
CLOG328 - Boomi for SAP Add-on (SAP ECC6 Exterior)	Modification	To be installed in SAP for each BG except for Lighting

Flux logiques

Flux logique	Type	Impact
--------------	------	--------

PRO1 - TMS

PRO1 - TMS

Informations générales

Code: PRO1

Titre: TMS

Type: TPRO1 - Implementation

Statut: En cours

Sponsor: ENT1 - VT Supply Chain (Interne)

Référence du train: None

Méteo: Aucun(e)

Taux avancement global estimé: 0

Taux avancement délai: 0

Date de début: 2025-06-01 00:00:00

Date de fin estimée: 2026-09-30 00:00:00

Date de fin réelle: None

Budget OPEX estimé: None

Budget OPEX réel: None

Budget CAPEX estimé: None

Budget CAPEX réel: None

Caractéristiques

Caractéristique	Nature	Valeur
-----------------	--------	--------

Contexte

OPmobility has decided to implement a central TMS (Transport Management System) solution that did not previously exist (either at the local or central level).

This solution requires process changes in the supply chain, the creation of ad-hoc department, and the implementation of an IT system supporting the entire process.

This solution will transform the transport operations' company across Mexico, US/Canada, Europe, and the rest of the world (APAC and South America regions).

Contributeurs

Entité	Acteur	Rôle
--------	--------	------

ADR

ADR	Description
-----	-------------

Key results

Key result	Description	Type
------------	-------------	------

Processus

Processus

Adhérences

Projet	Type	Impact
--------	------	--------

Démarche

Contraintes

Contrainte	Description
------------	-------------

Exigences

Exigence	Type	Description
PROEX1	Non fonctionnelle	User characteristics: In general, the users will be able to use the solution from a PC, a laptop or a tablet via the web portal of the solution. External partners will access the application only via the web portal; the admin user will have direct access (such as SSH) to the solution.
PROEX2	Non fonctionnelle	Location characteristics: The solution will be in long term to spread worldwide. In the context of the current document, the following country/region will be in the order withing the scope: Mexico, US/Canada, EMEA, APAC, SAO
PROEX3	Non fonctionnelle	Load characteristics: The shipment volume will progressively increase yearly: 2026: 100 000 shipments,2027: 450 000 shipments,2028: 470 000 shipments These volumes are approximative and will be detailed during the editor workshops.

Applications

Application	Type	Impact
APP954 - 4Flow	Modification	Introduction of a central TMS for transport planning, execution, optimization, and freight invoice control. Consumes master and demand data from SAP/EDI, performs transport and MRP related optimization, and sends outputs back to SAP. Carrier operational systems remain out of OPMobility responsibility.
APP955 - BOOMI	Modification	Extension of the integration layer to orchestrate SAP-TMS exchanges. Implements new SAP interfaces (master data, invoices) using the Boomi for SAP add on where available, or custom BAPIs for Lighting.
APP952 - SAP ECC6 Exterior	Modification	Activation and extension of interfaces toward the TMS ecosystem: exposure of master data, exchange of MRP optimization results, reception of carrier invoices for posting and archiving, and generation of new outbound logistics messages (plant to plant and returnable ASN)

Composants logiciels

Composant logiciel	Type	Impact
CLOG328 - Boomi for SAP Add-on (SAP ECC6 Exterior)	Modification	To be installed in SAP for each BG except for Lighting

Flux logiques

Flux logique	Type	Impact
--------------	------	--------

PRO1 - TMS

PRO1 - TMS

Informations générales

Code: PRO1

Titre: TMS

Type: TPRO1 - Implementation

Statut: En cours

Sponsor: ENT1 - VT Supply Chain (Interne)

Référence du train: None

Méteo: Aucun(e)

Taux avancement global estimé: 0

Taux avancement délai: 0

Date de début: 2025-06-01 00:00:00

Date de fin estimée: 2026-09-30 00:00:00

Date de fin réelle: None

Budget OPEX estimé: None

Budget OPEX réel: None

Budget CAPEX estimé: None

Budget CAPEX réel: None

Caractéristiques

Caractéristique	Nature	Valeur
-----------------	--------	--------

Contexte

OPmobility has decided to implement a central TMS (Transport Management System) solution that did not previously exist (either at the local or central level).

This solution requires process changes in the supply chain, the creation of ad-hoc department, and the implementation of an IT system supporting the entire process.

This solution will transform the transport operations' company across Mexico, US/Canada, Europe, and the rest of the world (APAC and South America regions).

Contributeurs

Entité	Acteur	Rôle
--------	--------	------

ADR

ADR	Description
-----	-------------

Key results

Key result	Description	Type
------------	-------------	------

Processus

Processus
PROCESS1 - Test processus

Processus: PROCESS1 - Test processus

Adhérences

Projet	Type	Impact
--------	------	--------

Démarche

Contraintes

Contrainte	Description
------------	-------------

Exigences

Exigence	Type	Description
PROEX1	Non fonctionnelle	User characteristics: In general, the users will be able to use the solution from a PC, a laptop or a tablet via the web portal of the solution. External partners will access the application only via the web portal; the admin user will have direct access (such as SSH) to the solution.
PROEX2	Non fonctionnelle	Location characteristics: The solution will be in long term to spread worldwide. In the context of the current document, the following country/region will be in the order withing the scope: Mexico, US/Canada, EMEA, APAC, SAO

PROEX3	Non fonctionnelle	Load characteristics: The shipment volume will progressively increase yearly: 2026: 100 000 shipments,2027: 450 000 shipments,2028: 470 000 shipments These volumes are approximative and will be detailed during the editor workshops.
--------	-------------------	--

Sécurité

Sécurité	Description
----------	-------------

Capacités

Capacité	Type	Impact
----------	------	--------

Objets métiers

Objet métier	Type	Impact
--------------	------	--------

Services

Service	Type	Impact
---------	------	--------

Solution applicative: PROSCEN1 - Applicative Solution

Description: None

Paysage applicatif impacté



Applications

Application	Type	Impact
-------------	------	--------

APP954 - 4Flow	Modification	Introduction of a central TMS for transport planning, execution, optimization, and freight invoice control. Consumes master and demand data from SAP/EDI, performs transport and MRP related optimization, and sends outputs back to SAP. Carrier operational systems remain out of OPMobility responsibility.
APP955 - BOOMI	Modification	Extension of the integration layer to orchestrate SAP-TMS exchanges. Implements new SAP interfaces (master data, invoices) using the Boomi for SAP add on where available, or custom BAPIs for Lighting.
APP952 - SAP ECC6 Exterior	Modification	Activation and extension of interfaces toward the TMS ecosystem: exposure of master data, exchange of MRP optimization results, reception of carrier invoices for posting and archiving, and generation of new outbound logistics messages (plant to plant and returnable ASN)

Composants logiciels

Composant logiciel	Type	Impact
--------------------	------	--------

Flux logiques

Flux logique	Type	Impact
--------------	------	--------

PRO1 - TMS

PRO1 - TMS

Informations générales

Code: PRO1

Titre: TMS

Type: TPRO1 - Implementation

Statut: En cours

Sponsor: ENT1 - VT Supply Chain (Interne)

Référence du train: Train 1

Météo: Moyenne

Taux avancement global estimé: 5

Taux avancement délai: 5

Date de début: 2025-06-01 00:00:00

Date de fin estimée: 2026-09-30 00:00:00

Date de fin réelle: 2026-06-06 00:00:00

Budget OPEX estimé: 200

Budget OPEX réel: 250

Budget CAPEX estimé: 300

Budget CAPEX réel: 350

Caractéristiques

Caractéristique	Nature	Valeur
CARAC66 - Criticity (Texte)	Propriété	None

Contexte

OPmobility has decided to implement a central TMS (Transport Management System) solution that did not previously exist (either at the local or central level).

This solution requires process changes in the supply chain, the creation of ad-hoc department, and the implementation of an IT system supporting the entire process.

This solution will transform the transport operations' company across Mexico, US/Canada, Europe, and the rest of the world (APAC and , South America regions).

Contributeurs

Entité	Acteur	Rôle
--------	--------	------

ENT1 - VT Supply Chain (Interne)	Courseaux David	Architecte domain
----------------------------------	-----------------	-------------------

ADR

ADR	Description
-----	-------------

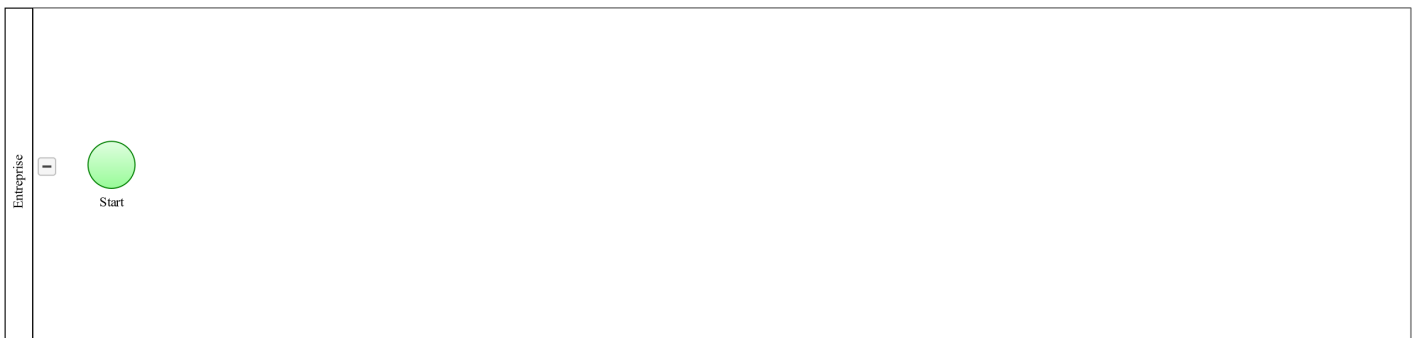
Key results

Key result	Description	Type
ECART1 - Key result	This is a key result	Fonctionnel

Processus

Processus
PROCESS1 - Processus

Processus: PROCESS1 - Processus



Adhérences

Projet	Type	Impact
PRO1 - TMS	Projet interne	Impact on itself ;-)
External project - An external project	Projet externe	Has impact on TMS project

Démarche

Ceci est la démarche de mon projet

Contraintes

Contrainte	Description
PROCONT1 - Constraint	A constraint

Exigences

Exigence	Type	Description
PROEX1	Non fonctionnelle	User characteristics: Users can access the solution via a web portal from a PC, laptop, or tablet. External partners use only the web portal, while admin users have direct access (e.g., SSH).
PROEX2	Non fonctionnelle	Location characteristics: The solution is intended for global deployment, with initial rollout in the following order: Mexico, US/Canada, EMEA, APAC, and SAO.
PROEX3	Non fonctionnelle	Load characteristics: Shipment volume will increase over time (approx.): 100,000 in 2026, 450,000 in 2027, and 470,000 in 2028. Final figures will be refined during workshops.

Sécurité

Sécurité	Description
PROSECU2 - SEC2	
PROSECU3 - SEC3	
PROSECU4 - SEC4	
PROSECU5 - SEC5	
PROSECU6 - SEC5	
PROSECU7 - SEC6	

Plan d'occupation des sols impacté



Capacités

Capacité	Type	Impact
CAP156 - Analyze performance	Modification	None

Cartographie des données impactée



Objets métiers

Objet métier	Type	Impact
OM6 - Customers	Modification	None

Services

Service	Type	Impact
SERV1 - Service	Modification	None

Solution applicative: PROSCEN1 - Applicative Solution

Description: This is the base scenario

Paysage applicatif impacté



Applications

Application	Type	Impact
-------------	------	--------

APP954 - 4Flow	Modification	Introduction of a central TMS for transport planning, execution, optimization, and freight invoice control. Consumes master and demand data from SAP/EDI, performs transport and MRP related optimization, and sends outputs back to SAP. Carrier operational systems remain out of OPMobility responsibility.
APP955 - BOOMI	Modification	Extension of the integration layer to orchestrate SAP-TMS exchanges. Implements new SAP interfaces (master data, invoices) using the Boomi for SAP add on where available, or custom BAPIs for Lighting.
APP952 - SAP ECC6 Exterior	Modification	Activation and expansion of interfaces with the TMS ecosystem: master data exposure, exchange of MRP optimization results, integration of carrier invoices (posting and archiving), and generation of outbound logistics messages (plant-to-plant and returnable ASN).

Composants logiciels

Composant logiciel	Type	Impact
CLOG321 - BOOMI (BOOMI)	Modification	impact composant logiciel

Flux logiques

Flux logique	Type	Impact
FLOG10 - Carrier invoice (BOOMI -> SAP ECC6 Exterior)	Modification	impact flux logique

ADR1 - adr1

ADR1 - adr1

ADR1 - adr1

Informations générales

Code: ADR1

Titre: adr1

Description:

Projet: None

Date maj statut: None

Date application: None

Date fin validité: None

Contexte: None

Dérogation: None

Statut cycle de vie: Proposé

Date cycle de vie: 2026-04-17 00:00:00

Cycles de vie

Date	Statut
2026-04-17 00:00:00	Proposé

Décideurs

Nom	Prénom	Rôle
-----	--------	------

Applications concernées

Application	Commentaire
-------------	-------------

DETTE1 - ma dette

DETTE1 - ma dette

DETTE1 - ma dette

Informations générales

Code: DETTE1

Titre: ma dette

Description:

Etat: Assumée

Date déclaration: 2026-04-01 00:00:00

Date prévisionnelle remédiation: 2026-04-24 00:00:00

Date effective remédiation: None

Existant: None

Attendu: None

Justification/Risque

Justification écart: None

Responsable: None

Nature: Aucun(e)

Risque associé: Aucun(e)

Niveau risque: Aucun(e)

Estimation coût

Coût estimé incident: None

Coût estimé remédiation: None

Applications concernées

Application

PRO2 - TEST

PRO2 - TEST

Informations générales

Code: PRO2

Titre: TEST

Type: TPRO1 - Implementation

Statut: A démarrer

Sponsor: ENT1 - VT Supply Chain (Interne)

Référence du train: None

Méteo: Aucun(e)

Taux avancement global estimé: 0

Taux avancement délai: 0

Date de début: 2026-04-30 00:00:00

Date de fin estimée: 2026-05-30 00:00:00

Date de fin réelle: None

Budget OPEX estimé: None

Budget OPEX réel: None

Budget CAPEX estimé: None

Budget CAPEX réel: None

Caractéristiques

Caractéristique	Nature	Valeur
CARAC66 - Criticity (Texte)	Propriété	None

Contexte

Contributeurs

Entité	Acteur	Rôle
--------	--------	------

ADR

ADR	Description
-----	-------------

Key results

Key result	Description	Type
------------	-------------	------

Processus

Processus

Adhérences

Projet	Type	Impact
--------	------	--------

Démarche

Contraintes

Contrainte	Description
------------	-------------

Exigences

Exigence	Type	Description
----------	------	-------------

Sécurité

Sécurité	Description
----------	-------------

Capacités

Capacité	Type	Impact
----------	------	--------

Objets métiers

Objet métier	Type	Impact
--------------	------	--------

Services

Service	Type	Impact
---------	------	--------

ADR2 - adr1

ADR2 - adr1

Informations générales

Code: ADR2

Titre: adr1

Description:

Projet: None

Date maj statut: None

Date application: None

Date fin validité: None

Contexte: None

Dérogation: None

Statut cycle de vie: Proposé

Date cycle de vie: 2026-05-14 00:00:00

Cycles de vie

Date	Statut
2026-05-14 00:00:00	Proposé

Décideurs

Nom	Prénom	Rôle
-----	--------	------

Applications concernées

Application	Commentaire
-------------	-------------

DETTE2 - ma dette

DETTE2 - ma dette

DETTE2 - ma dette

Informations générales

Code: DETTE2

Titre: ma dette

Description:

Etat: Assumée

Date déclaration: 2026-04-30 00:00:00

Date prévisionnelle remédiation: 2026-05-22 00:00:00

Date effective remédiation: None

Existant: None

Attendu: None

Justification/Risque

Justification écart: None

Responsable: None

Nature: Aucun(e)

Risque associé: Aucun(e)

Niveau risque: Aucun(e)

Estimation coût

Coût estimé incident: None

Coût estimé remédiation: None

Applications concernées

Application

ADR3 - adr1

ADR3 - adr1

Informations générales

Code: ADR3

Titre: adr1

Description:

Projet: PRO1 - TMS

Date maj statut: None

Date application: None

Date fin validité: None

Contexte: None

Dérogation: None

Statut cycle de vie: Proposé

Date cycle de vie: 2026-05-15 00:00:00

Cycles de vie

Date	Statut
2026-05-15 00:00:00	Proposé

Décideurs

Nom	Prénom	Rôle
-----	--------	------

Applications concernées

Application	Commentaire
-------------	-------------

PRO3 - un nouveau projet

PRO3 - un nouveau projet

Informations générales

Code: PRO3

Titre: un nouveau projet

Type: TPRO1 - Implementation

Statut: A démarrer

Sponsor: ENT1 - VT Supply Chain (Interne)

Référence du train: None

Méteo: Aucun(e)

Taux avancement global estimé: 0

Taux avancement délai: 0

Date de début: 2026-05-06 00:00:00

Date de fin estimée: 2026-05-30 00:00:00

Date de fin réelle: None

Budget OPEX estimé: None

Budget OPEX réel: None

Budget CAPEX estimé: None

Budget CAPEX réel: None

Caractéristiques

Caractéristique	Nature	Valeur
CARAC66 - Criticity (Texte)	Propriété	None

Contexte

Contributeurs

Entité	Acteur	Rôle
--------	--------	------

ADR

ADR	Description
-----	-------------

Key results

Key result	Description	Type
------------	-------------	------

Processus

Processus

Adhérences

Projet	Type	Impact
--------	------	--------

Démarche

Contraintes

Contrainte	Description
------------	-------------

Exigences

Exigence	Type	Description
----------	------	-------------

Sécurité

Sécurité	Description
----------	-------------

Capacités

Capacité	Type	Impact
----------	------	--------

Objets métiers

Objet métier	Type	Impact
--------------	------	--------

Services

Service	Type	Impact
---------	------	--------

DETTE3 - test

DETTE3 - test

DETTE3 - test

Informations générales

Code: DETTE3

Titre: test

Description:

Etat: En cours

Date déclaration: 2026-05-08 00:00:00

Date prévisionnelle remédiation: 2026-06-06 00:00:00

Date effective remédiation: None

Existant: None

Attendu: None

Justification/Risque

Justification écart: None

Responsable: None

Nature: Aucun(e)

Risque associé: Aucun(e)

Niveau risque: Aucun(e)

Estimation coût

Coût estimé incident: None

Coût estimé remédiation: None

Applications concernées

Application
